

River Murray Flood Recovery

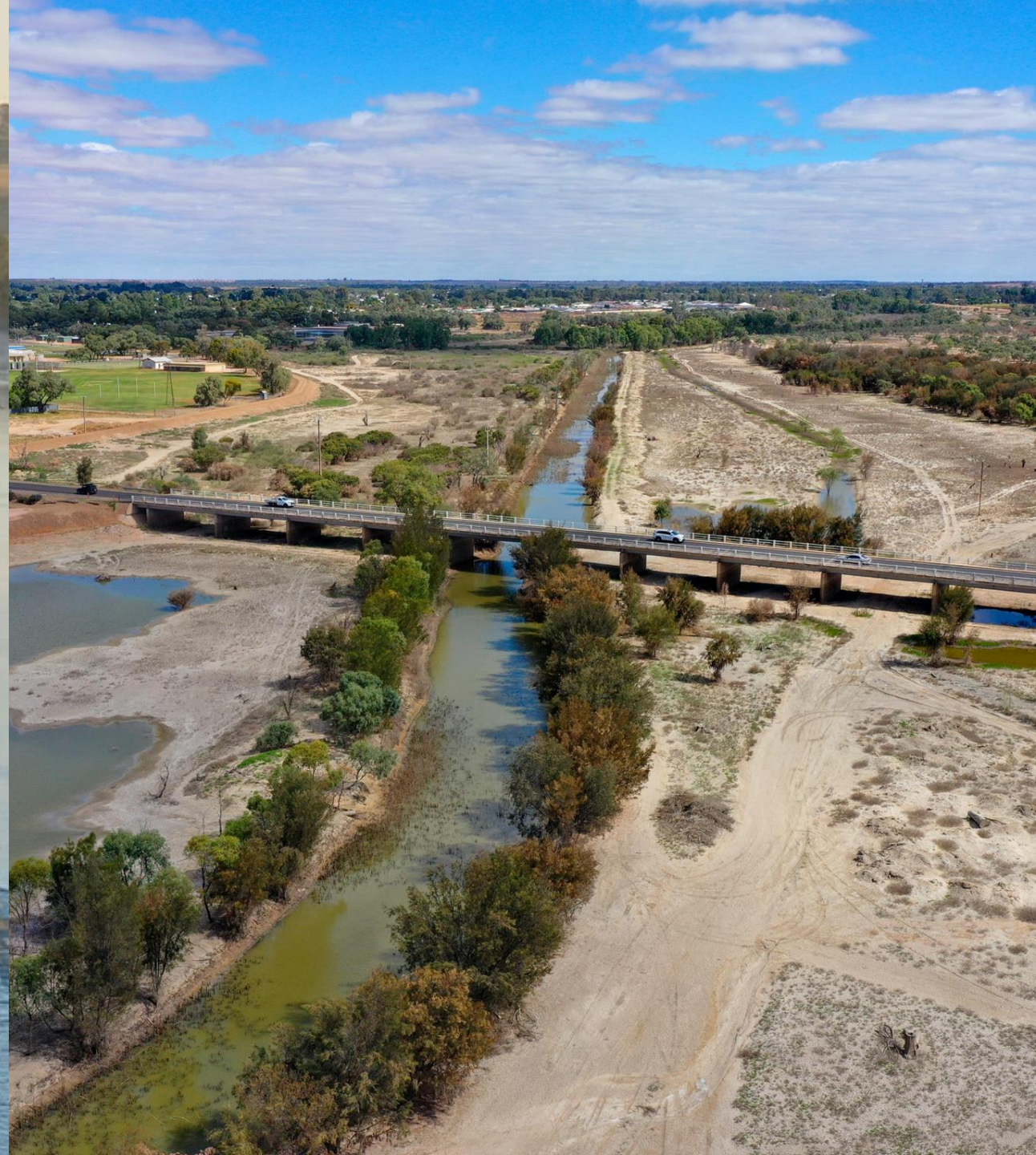
Alex Zimmermann
Community Recovery
Coordinator



**Government
of South Australia**

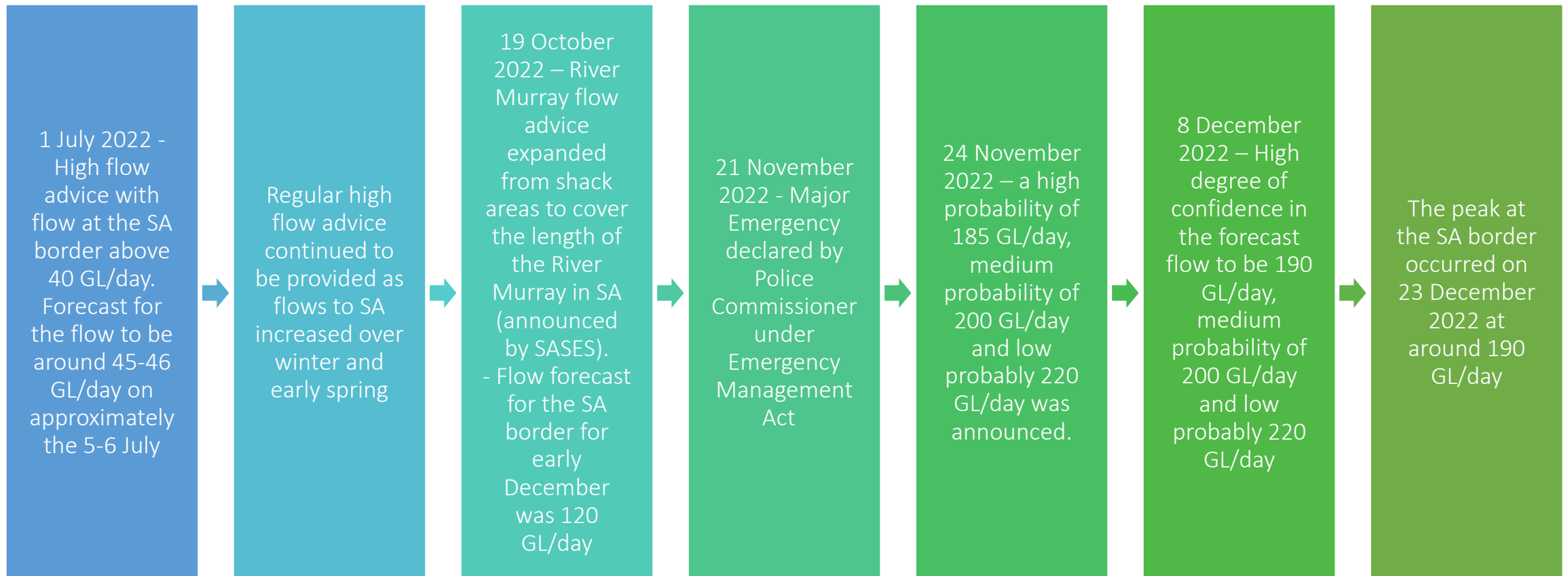
Department of the
Premier and Cabinet

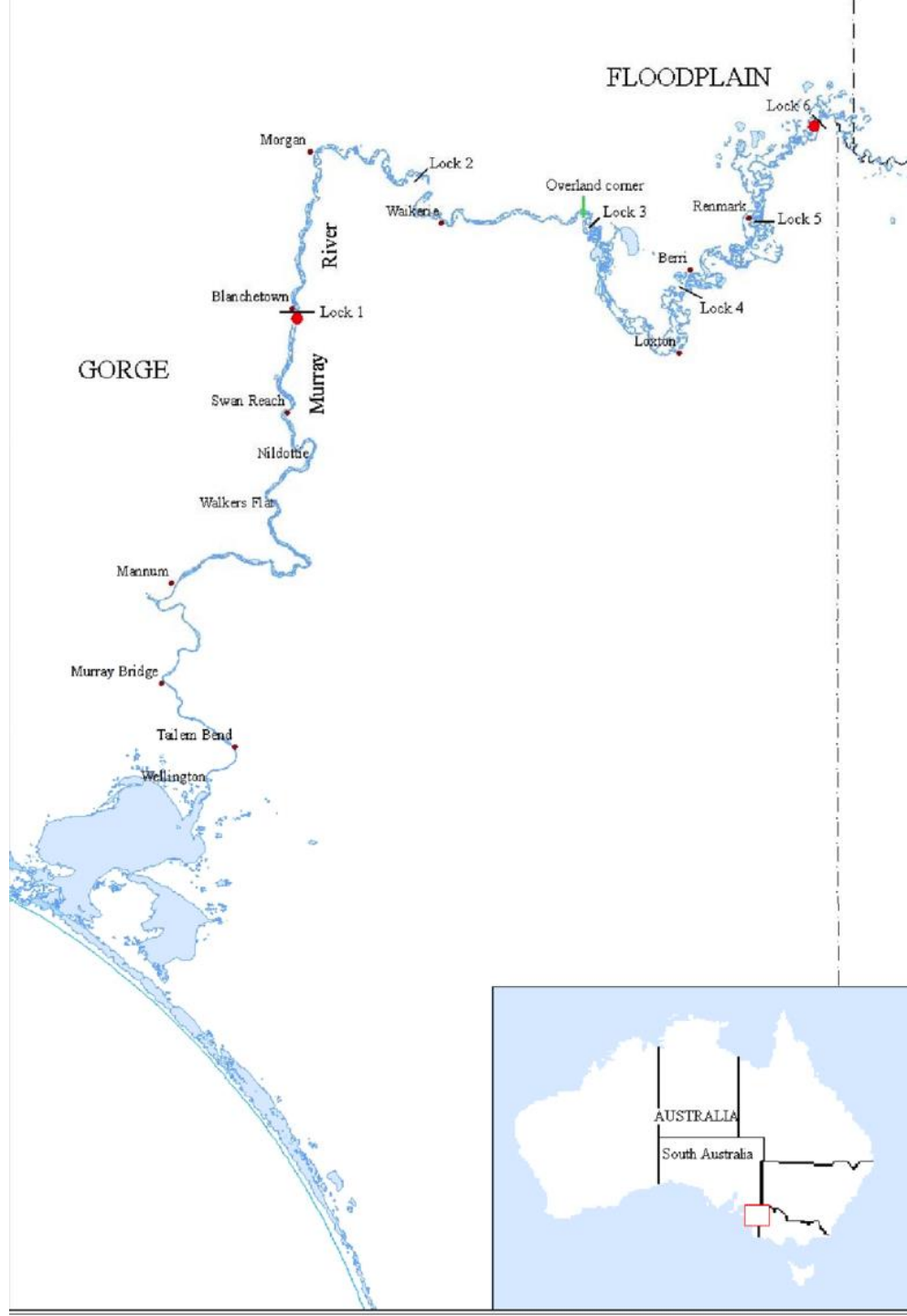
Pre-flood





River Murray Flood Timeline

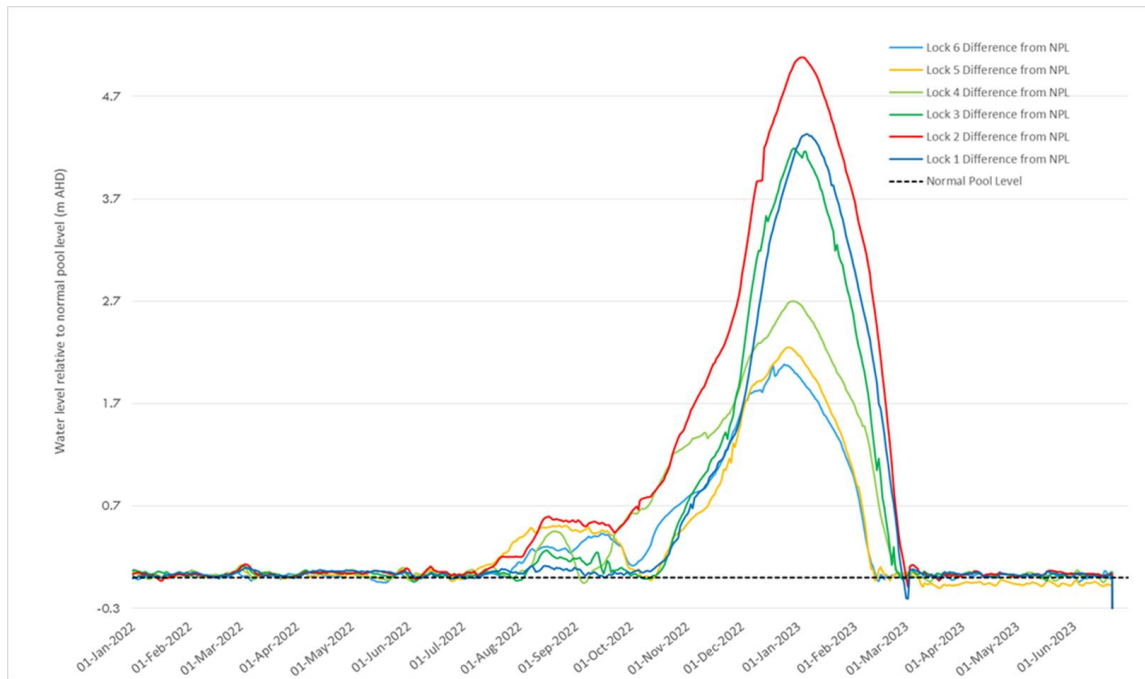




Increase in water levels during the flood

Lock locations and increase (m)

- Lock 6 – Murtho 2.07 increase
- Lock 5 – Renmark 2.35 increase
- Lock 4 – Bookpurnong 2.7 increase
- Lock 3 – Overland Corner 4.19 increase
- Lock 2 – Taylorville 5.08 increase
- Lock 1 – Blanchetown 4.34 increase



Location	River Km	Normal Pool Level (m AHD)	Highest water level during the 2022-23 Flood (m AHD)
Lock 6	619.8	19.25	21.32
Lock 5	562.4	16.30	18.65
Lock 4	516.2	13.20	15.90
Lock 3	431.4	9.80	13.99
Lock 2	362.1	6.10	11.18
Lock 1	274.2	3.20	7.54

\$194 million

FLOOD ASSISTANCE PACKAGE

8

LOCAL
GOVERNMENT
AREAS IMPACTED

90 907
hectares

AREA OF LAND
FLOODED
(APPROX)

3 294

PROPERTIES
DAMAGED

3 368

CUSTOMERS
DISCONNECTED
FROM POWER

544

PRIMARY
PRODUCTION
BUSINESSES
IMPACTED

During



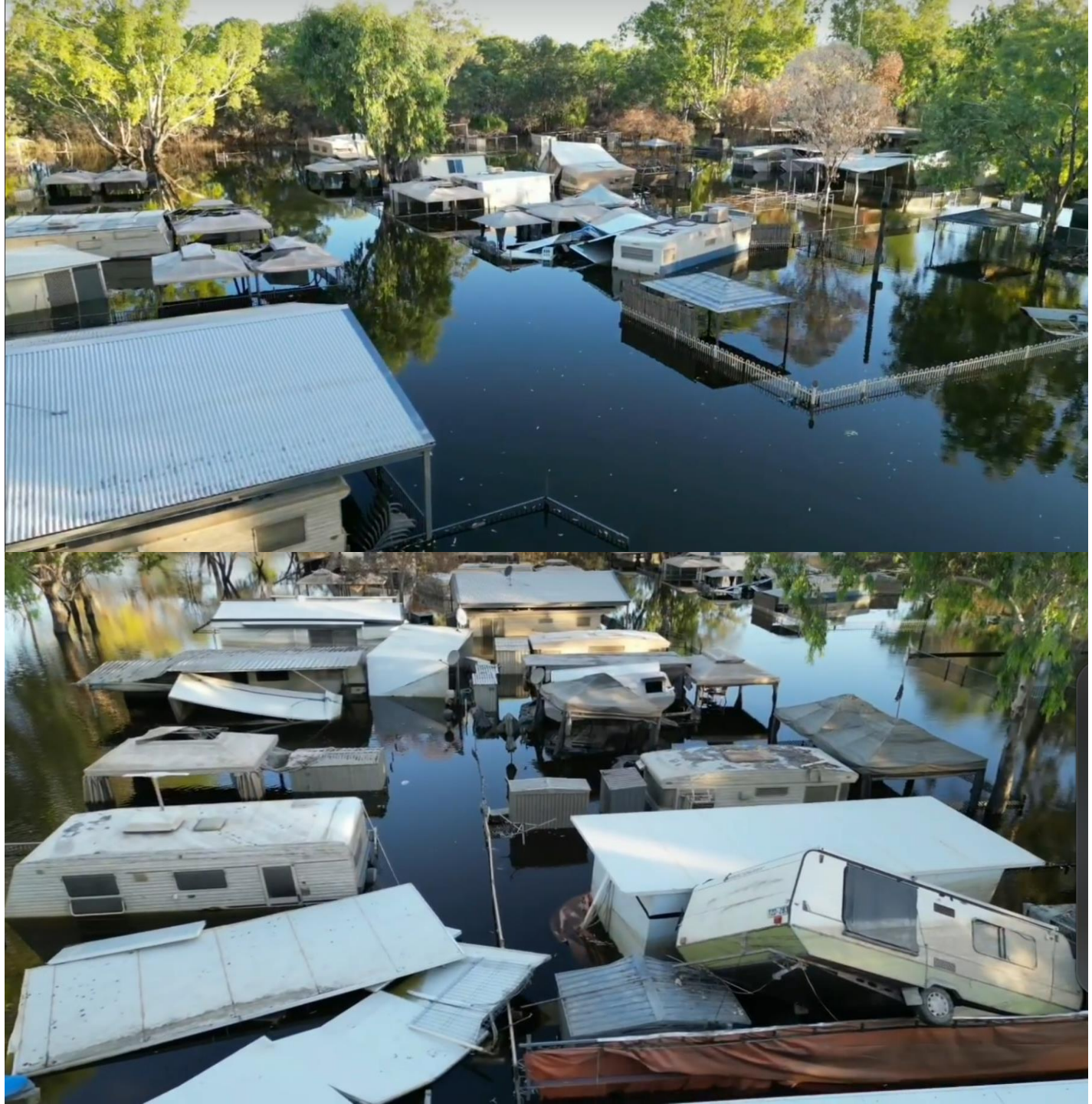


























Aftermath



1956

LOXTON
Tree of Knowledge
Flood Levels

2022

1931

1974

1975

1973

1952

1990 1993

1991 1951

1992

2016

1989

2011

TREE
OF KNOWLEDGE
FLOOD LEVELS













OFFICIAL





Relief and Recovery

Relief and Recovery Centre Activity

Emergency Relief Centres – Berri/Mannum/Murray Bridge (Nov 2022 – Feb 2023)

Attendance – 2,397

Outbound calls – 1,613

Total enquiries – 4,010

Recovery Centres – Berri/Mannum/Murray Bridge (1 March – 31 August 2023)

Attendance – 1228

Outbound calls – 4,557

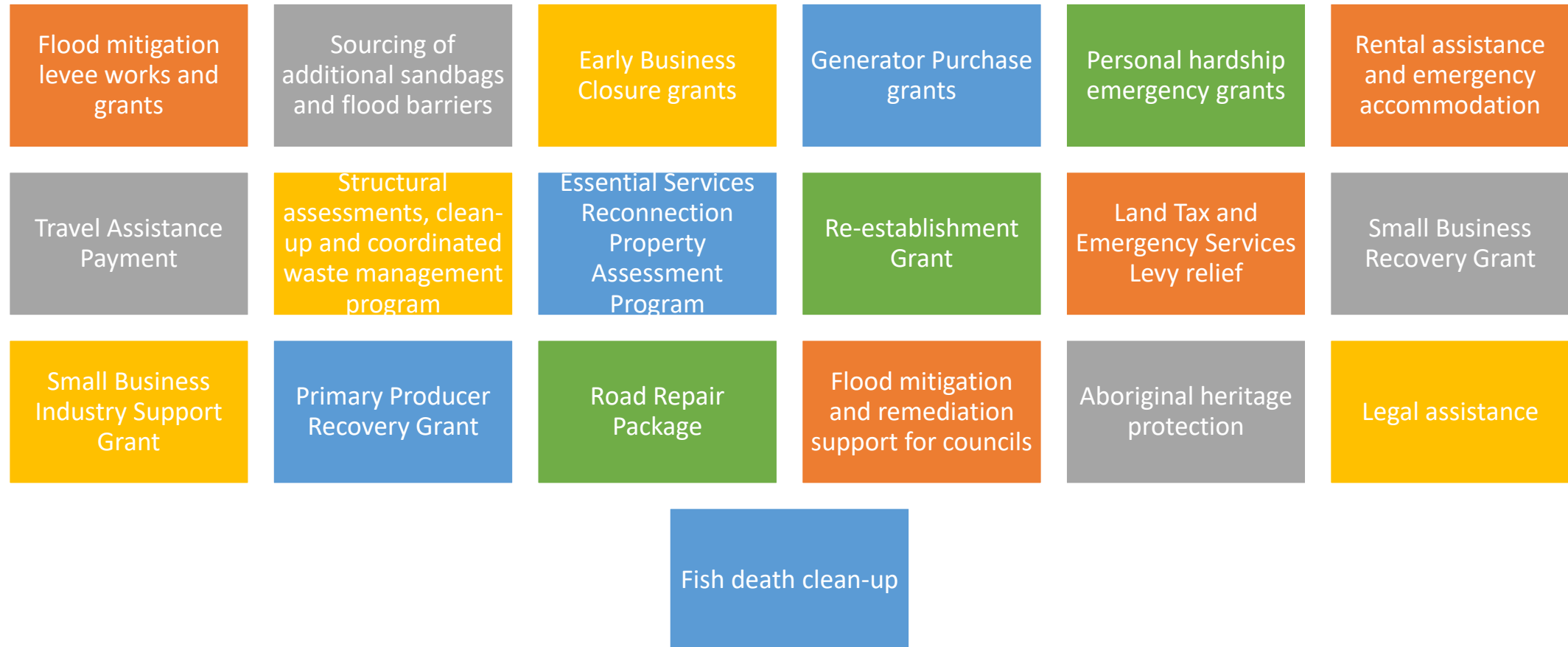
Recovery hotline calls – 521

Total enquiries – 6,306

Pop-up Recovery Centres – 10 locations so far

Total attendance all sites – 131

Relief and recovery measures





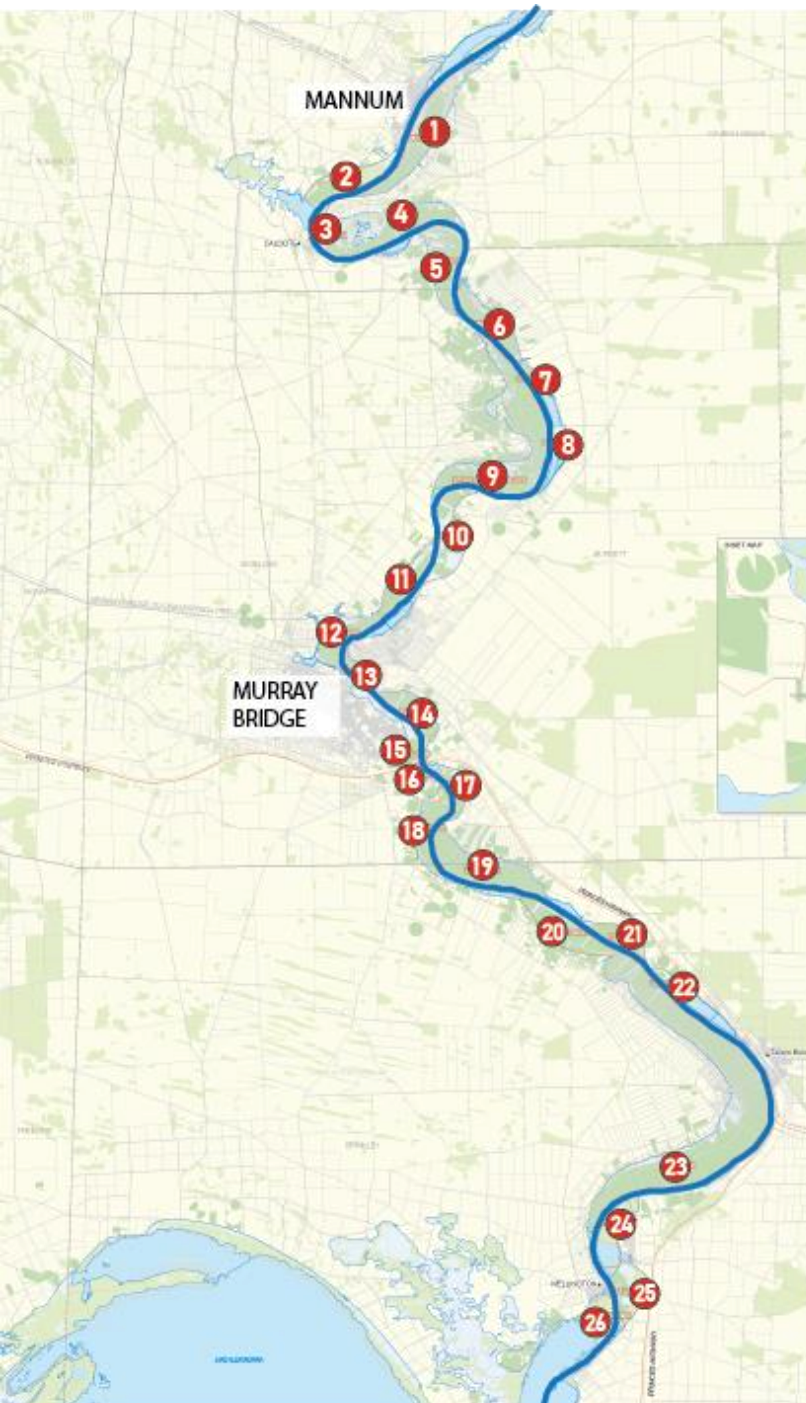
Flood Waste Management

- Kerbside collections began on 18 February 2023
- Disaster Management Australia signed on 28 March 2023
- 1864 property owners registered for assistance under the government's clean-up program funded by the South Australian and Australian governments.
- 267 workers inducted into the program, 93.6% are South Australian. Total labour hours for the program are tracking at 76% South Australian.
- 85% South Australian plant & equipment used on the program to date.
- Total of 14,151 tonnes of waste collected, 40.43% diverted from landfill
- 581 tonnes of asbestos collected
- Disaster Relief Australia volunteers spent 5,400 hours on the ground assisting the community with flood clean up

THE LMRIA

Lower Murray Reclaimed Irrigation Area

- Reclaimed swamp areas from Mannum to Wellington
- Clearance of wetlands between 1881 – 1940
- From 1940 built levee banks, barrages
- Millennial drought caused significant damage to levees



River Murray swamps

- 1 Cowirra
- 2 Baseby
- 3 Neeta North
- 4 Neeta
- 5 Wall Flat
- 6 Pompoota
- 7 Burbridge
- 8 Paiwalla
- 9 Mypolonga
- 10 Glen Lossie
- 11 Toora
- 12 Mobilong
- 13 Burdett
- 14 Long Flat
- 15 Long Island
- 16 Swanport
- 17 Yiddinga
- 18 River Glen
- 19 Monteith
- 20 Woods Point
- 21 Kilsby
- 22 Westbrook
- 23 Jervois
- 24 Placid
- 25 McFarlane
- 26 Wellington



River Murray Community Recovery



- Recovery Coordinator appointed 22 November 2022
- 18 Community meetings in different locations
- First meeting of Recovery Committee held on 30 January 2023
- 12 Community Recovery Committee meetings
- 57 standing members from relevant state agencies, impacted councils, shack owners, houseboat operators, community members and other stakeholders.
- Separate committees reporting to the Recovery committee include those established to deal with Wellbeing and Mental Health, Tourism, LMRIA and Waste Management
- Developed the Community Recovery Plan

River Murray Flood Community Newsletter



- Regular River Murray Flood Community Newsletters sent to impacted communities via email
- First newsletter released on Friday, February 17, 2023
- Updates on grant information, community events, pop-up recovery centres and more
- 25 editions released to date – currently published fortnightly
- Subscribe to the River Murray Flood Community Newsletter and view previous editions at recovery.sa.gov.au

STATE RECOVERY PLAN

Coordinated recovery for River Murray communities

SOCIAL



First Nations communities

Proactive engagement with impacted First Nations communities

Coordinating community recovery

Community informed recovery

Easing personal hardship

Grants and programs to provide support

Temporary housing

Keeping people safe

Individual and community wellbeing

Outreach, recovery and mental health services

Communications

Consistent, timely information to impacted communities



INFRASTRUCTURE



Transport

Reopening road and ferry networks

Waste management

Disposal of debris and flood waste

Improving infrastructure

Enhanced infrastructure resilience

Reconnection grants

Connecting to essential services

ECONOMIC



Tourism

Restoring and promoting regional tourism

Providing incentives to visit the region

Small business

Supporting small business and

restoring consumer confidence

Grant assistance

Primary producers

Standing by our primary producers

Assist with clean up, recovery and reinstatement

ENVIRONMENT



River amenity

Repairing our waterways

Water quality

Targeted irrigator support

Mosquitoes

Protecting and educating the community

on mosquito diseases

National Parks and Wildlife

Protecting our Flora and Fauna

Clean-up and re-opening our National Parks and Reserves

Questions?